

Reversible Little Boxy Dress Sewing Pattern

Measurements for US Size 4, UK/AU Size 8

Seam allowance is NOT included.

Add 1cm seam allowance for all edges, except following:

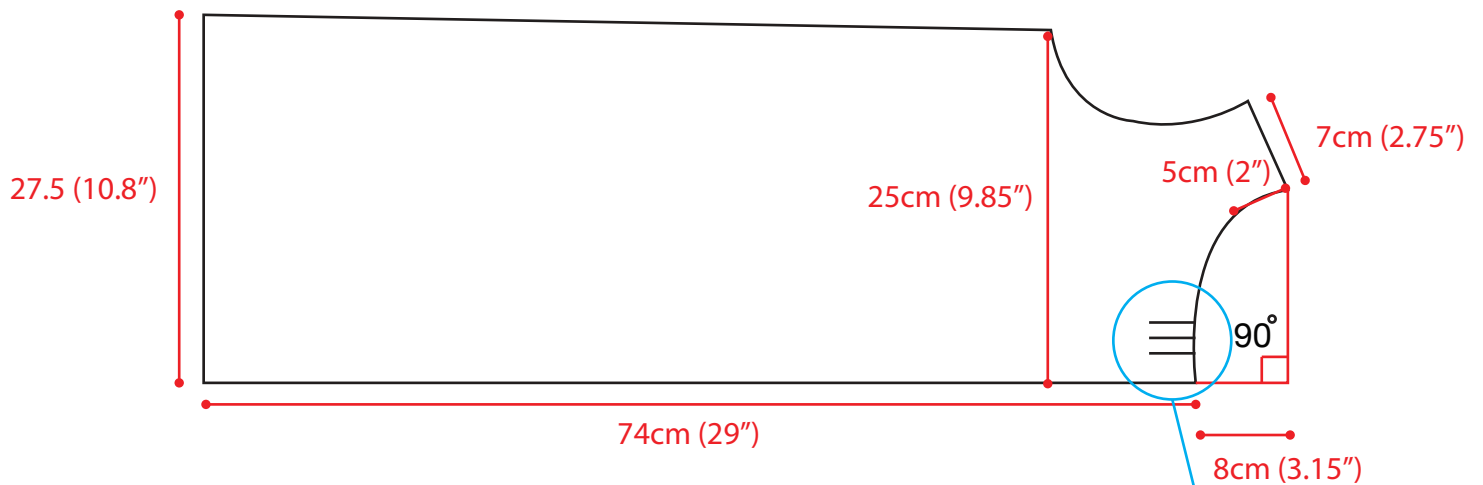
Armhole and Neckline - 0.5cm

Hem - 3cm

See YouTube video tutorial for detailed instructions. Diagram is not to scale.

© 2015 SewinLove.com.au

Little Boxy Dress - FRONT



Little Boxy Dress - BACK

